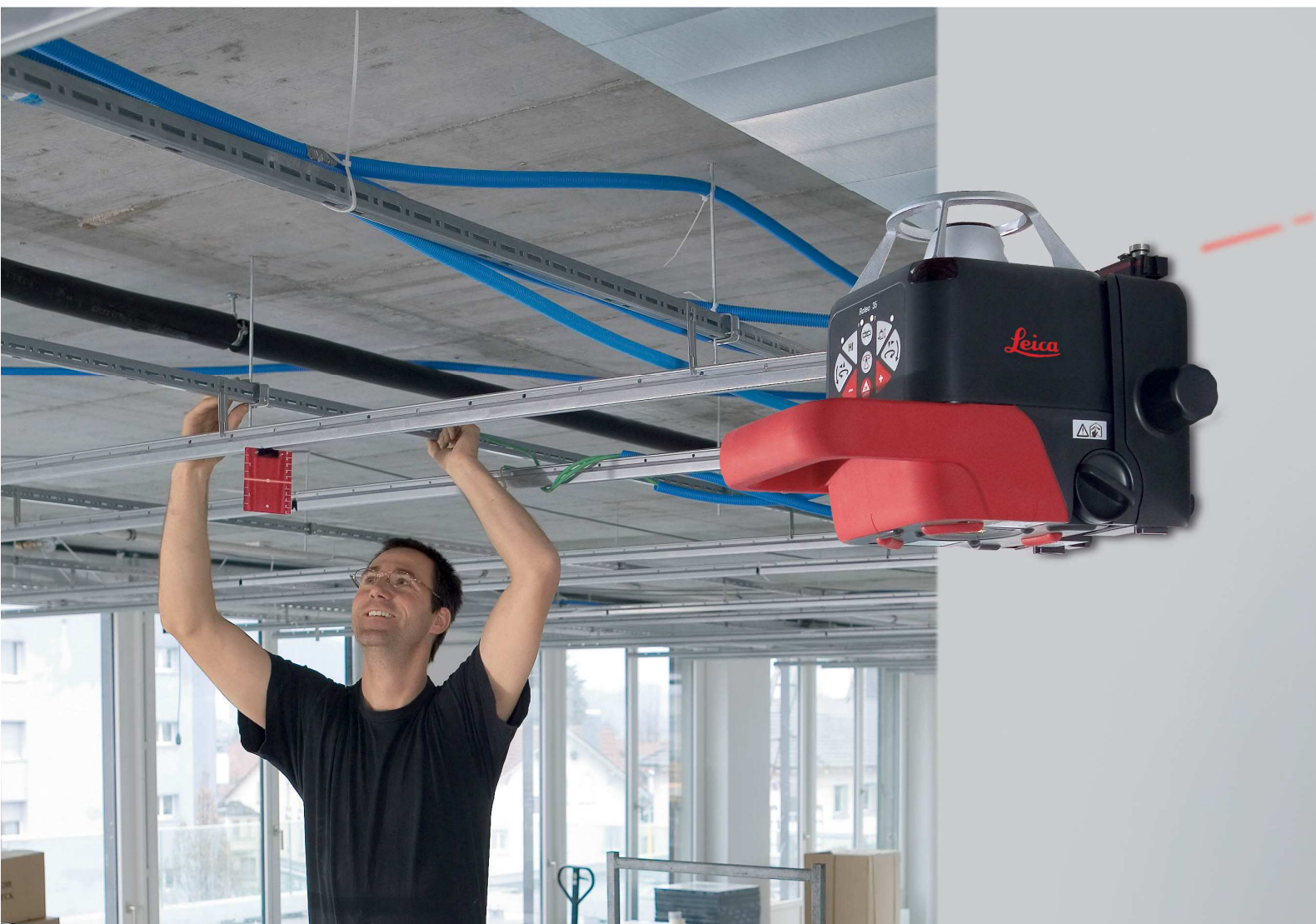


# Leica Roteo 35WMR

## The All-in-one rotating laser



### All-round perfection on all levels

On ceilings or walls, on the floor or on a tripod, the Leica Roteo 35WMR rotating laser is a multi-talented performer.

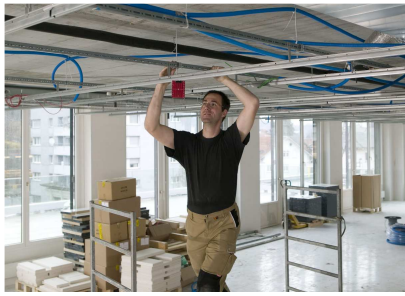
You can use it to work precisely on many indoor and outdoor tasks in which leveling or aligning is required.

#### Featured with

- Fully automatic horizontal and vertical laser
- Motorized wall mount
- Removable protective cage
- Scan mode
- 90° plumb beam
- Outstanding battery life for working without interruption

- when it has to be right

**Leica**  
Geosystems



### Installing ceilings and walls

With its motorized wall mount, the Leica Roteo 35WMR can be positioned on the wall and moved effortlessly backwards and forwards using the combined remote control/detector unit, allowing you to quickly suspend ceilings and erect dry-walls.



### Marking out right angles

The Leica Roteo 35WMR is also a great help in the vertical plane. The combination of a vertical 360° reference plane and plumb beam simplifies layout, allowing you to work more accurately and efficiently on interior works.



### Stairs and roof pitches

You can position the laser manually or with the help of the wall mount at any angle between 0° and 90°, allowing you to work without any problems on stairs and roof pitches.

### Leica Roteo 35WMR Packages Art.No. 765752

- Leica Roteo 35WMR rotating laser
- Motorized wall mount
- RRC350 combined remote control/detector unit with clamp
- 9V-Battery for the combined unit
- Battery holder for alkaline batteries
- Rechargeable NiMH battery pack
- International charger
- Red target plate
- Red laser glasses



### Technical Specifications

Leica Roteo 35WMR	
Operating range (rotating beam)	up to 150 m (500 ft) radius with laser receiver
Self-leveling accuracy	± 3 mm at 30 m (± 1/8" at 100 ft)
Automatic self-leveling laser	vertically
Self-leveling range	± 4.5°
Rotating speed	variable (5-settings)
Battery types	D-cell (mono), 2 x 1.5 V or rechargeable battery pack
Battery life	50 hours (rechargeable), up to 160 hours (alkaline batteries)
Protection class	IP 54, dust- and splash-proof

Laser class 3R in accordance with IEC 60825-1 and EN 60825-1

### Recommended original accessories

CLR290 Clamp Rod\*

Art. No. 761762



CTP106 Aluminium Tripod

Art. No. 767712



CET103 Crank-head tripod

CTP104D Aluminium Tripod

Art. No. 768033

Art. No. 776711



\* Not available in the USA

Illustrations, descriptions and technical specifications are not binding and may change.  
Copyright© Leica Geosystems AG, Heerbrugg, Switzerland, 2009.

Leica Geosystems AG  
Heerbrugg, Switzerland  
[www.leica-geosystems.com](http://www.leica-geosystems.com)

■ Authorized Leica Geosystems Distributor

- when it has to be **right**

**Leica**  
Geosystems