



BLK360 UPLIFT

DATA SHEET

September 2019

www.scan-go.eu

Scan&Go srl

Via della Tecnica 34 A/B - 41051
Castelnuovo Rangone (MO) - Italy
Cell. +39 3924627285
info@scan-go.eu

BLK360 UPLIFT

ALUMINIUM TELESCOPIC LIFTER

BLK360UPLIFT is a telescopic lifter made of anodized aluminum, with manual lifting composed of 2 sections, the laser scanner to be positioned at maximum height of 2.20 mt. and can reach up to 3.20 meters with an aluminum extension (to be used only with Leica BLK360 laser scanner).

Combines stability with great sturdiness.

All metallic components (articulated parts, pressure knobs, leg braces, etc.) guarantee maximum durability and strength.

It is equipped with:

- double safety locking system by means of safety-bolt
- pressure knob

Useful in all inaccessible places when is necessary to have scans at different heights, removing shadows and obstacles, for example buildings, alleys and inner courtyards

Benefits:

- Easy to use
- Short setup and uninstall time
- Easy movement among scanning stations
- Significant increase of the 3D Laser Scanner measuring range

**THE BLK360 UPLIFT IS PERFECT FOR
ALL LASER SCANNERS
WITH MAXIMUM WEIGHT UP TO 10 kg**

**The one meter extension can only be used with
Leica BLK360 laser scanner**

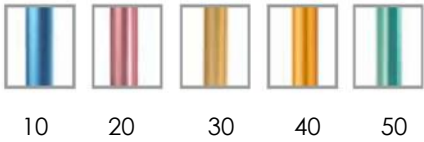
BLK360 UPLIFT
can be used with Laser Scanner
FARO
LEICA BLK360 and RTC360



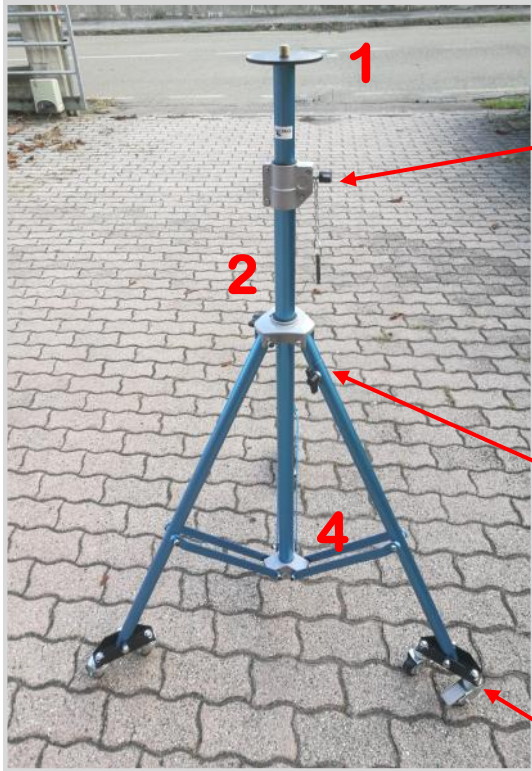
TECHNICAL DATA

- | | |
|-------------------------|--|
| • Height closed | 120 cm |
| • Maximum Height opened | 220 cm (with an aluminum extension 320 cm) |
| • Basic diameter opened | 110 cm |
| • Section | 2 |
| • Maximum load | 10 kg |
| • Weight | 5 kg |
| • Dimension closed | 120x20x20 cm |

DETAILS AND ACCESSORIES



available color codes



1	5/8" CONNECTION
2	COLUMN
3	DOUBLE SAFETY LOCKING SYSTEM WITH SAFETY-BOLT AND PRESSURE KNOB
4	DOUBLE REINFORCING BRACES
5	ADJUSTABLE LEGS
6	BRAKING WHEELS

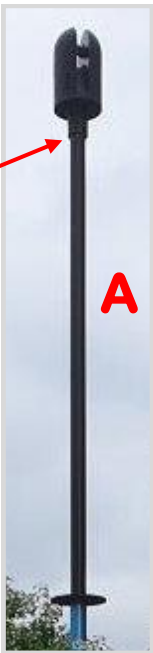
ACCESSORIES NOT INCLUDED

to be ordered separately

A	AD-EL Additional element of 1mt to be ordered separately and to be used only with Leica BLK360 laser scanner	
B	ADAPTER 3/8"	



B



A



STANDARD



WITH ADDITIONAL ELEMENT



NEW surveying technology & solutions



Made in Italy