

MicroSurvey STAR*NET 9 adds advanced new capabilities to the Integrated Data Editor, making it easier than ever to manually create, edit and debug the data files for your survey networks.

MicroSurvey STAR*NET 9

Features and Benefits

Brian Sloman

Table of Contents

MicroSurvey STAR*NET 9.....	2
New: 64-bit Version	2
New: Command Auto-Completion.....	3
New: Command Help Tips.....	4
New: Inline Error Messages	5
New: Column Editing.....	6
Enhanced: Find Point	7

MicroSurvey STAR*NET 9

Release Date: September 15, 2017

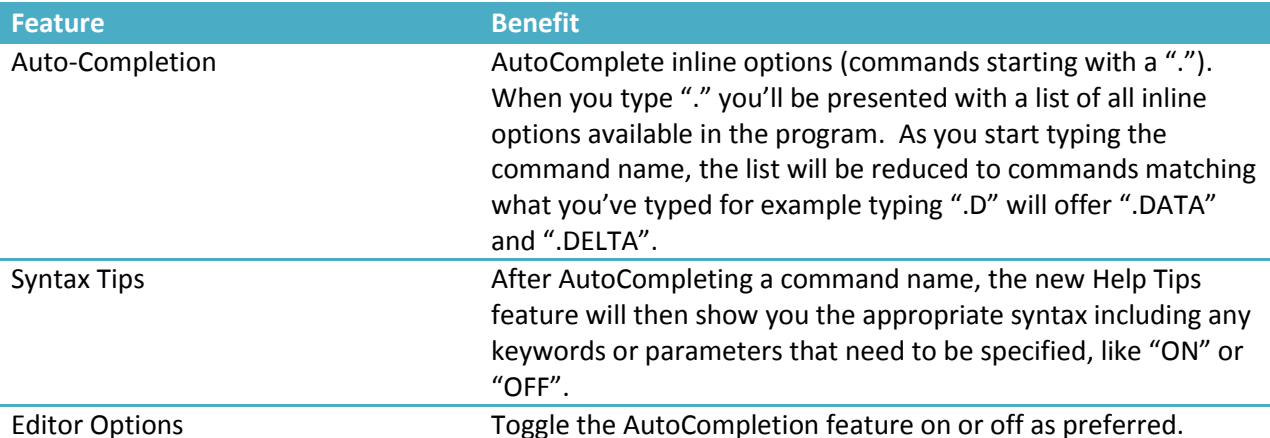
New: 64-bit Version

Upgrade Tour Movie: n/a



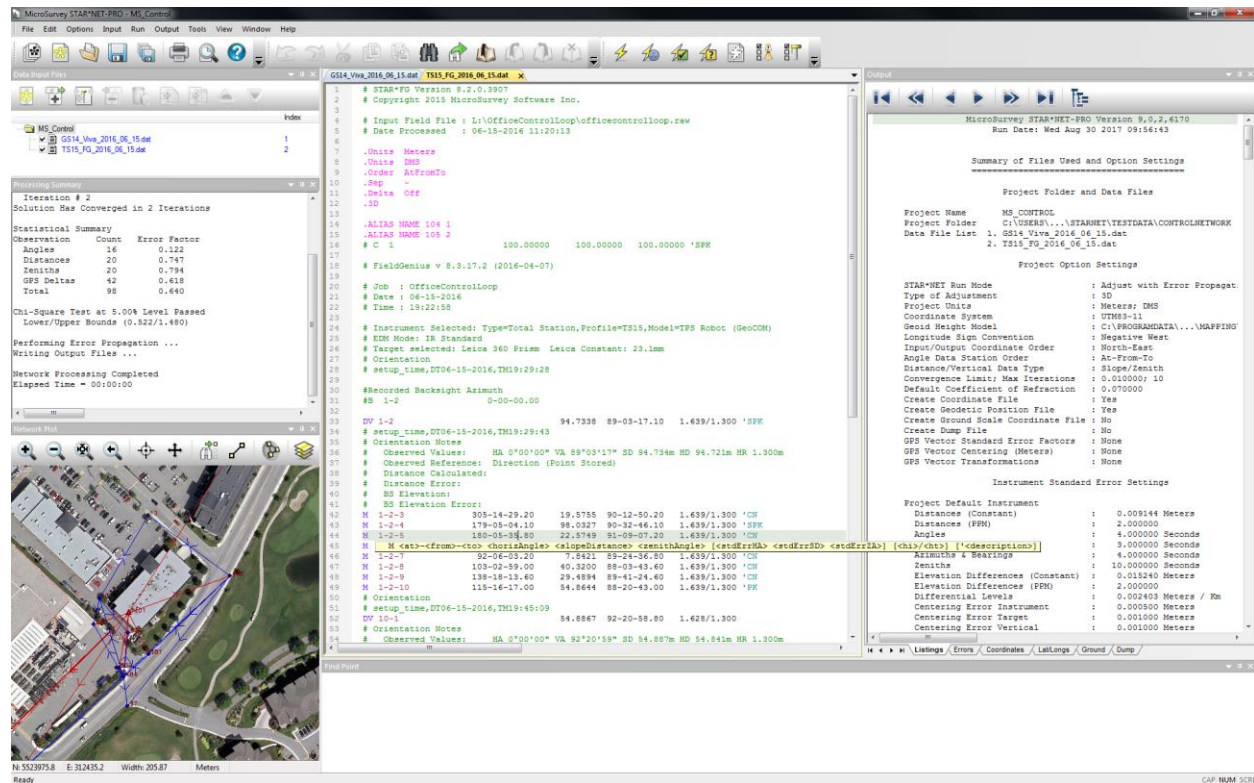
Feature	Benefit
64-bit Version	A 64-bit application can use more system resources (memory) and can access those resources more efficiently, and program execution can be faster due to the higher bandwidth.
32-bit Version	A 32-bit version is also still available for any users who are still using a 32-bit operating system. The 32-bit version cannot be installed on a 64-bit system.

Upgrade Tour Movie: [click here](#)



New: Command Help Tips

Upgrade Tour Movie: [click here](#)



Feature

Benefit

Context Sensitive Help Tips

Help text that concisely describes the selected command, its syntax and applicable options makes it easy to manually modify your data files, without having to remember specific syntax or cross-referencing with the product manual.

Project Options Sensitive Syntax

The Help Tips will display syntax that is sensitive to your Project Options, including:

- whether the adjustment type is 2D or 3D;
- whether the coordinate order is North-East or East-North;
- whether the station order is At-From-To or From-At-To;
- whether the distance and vertical data type is Slope Distance and Zenith Angle or Horizontal Distance and Vertical Distance.

Context Sensitive Help File

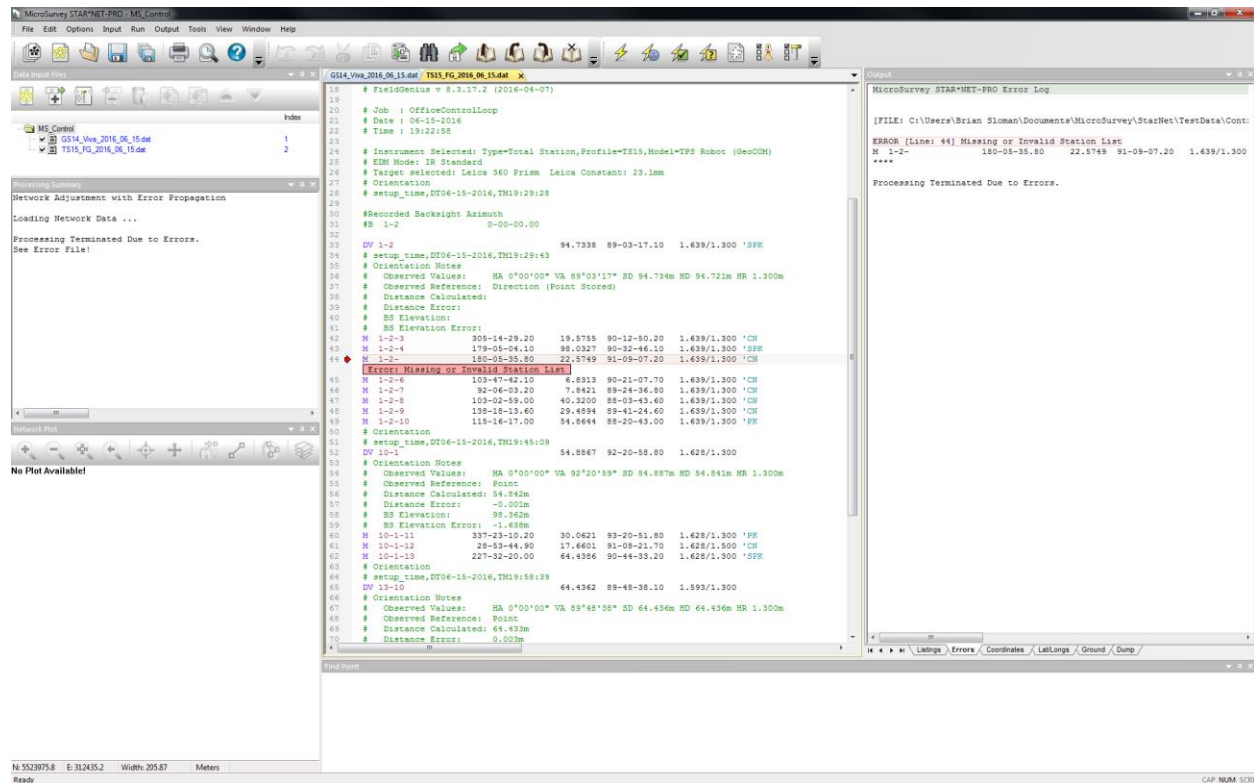
All data lines and inline options are now context sensitive, so pressing "F1" will directly open the appropriate Help File for that specific data line.

Editor Options

Toggle the Help Tips on or off, switch them between a floating or inline display style, and control how much information to display in the tips.

New: Inline Error Messages

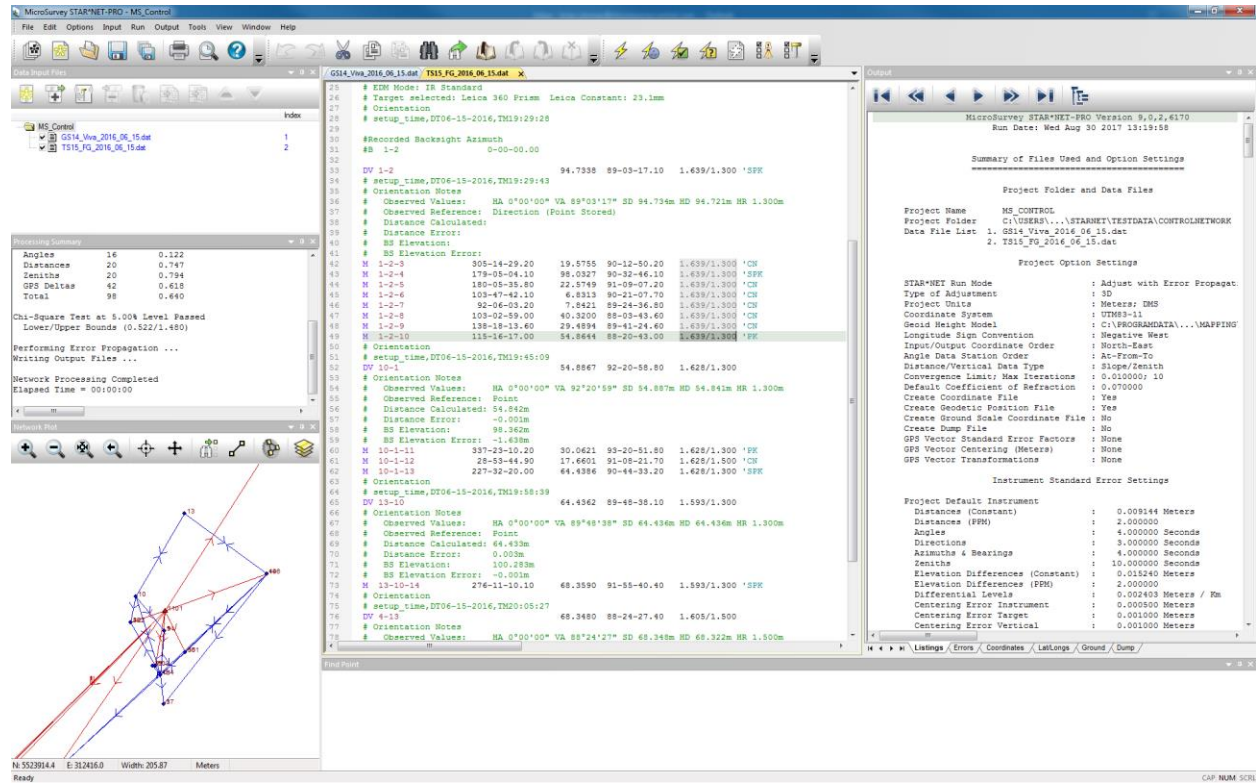
Upgrade Tour Movie: [click here](#)



Feature	Benefit
Inline Error Messages	When an error occurs during adjustment, any error messages related to a specific data line are displayed within the data file directly below the problem line(s) making it easy to find and determine the specific problem.
Error Bookmarks	All such Error Lines are automatically bookmarked so you can navigate through them with the Next/Previous Bookmark commands or by pressing F2 and Shift-F2. These bookmarks are automatically cleared/updated on the next run.
Jump from Error File	Clicking on an error message in the Error File will automatically take you to the data line corresponding with the error.
Editor Options	Toggle the Inline Error Messages on or off as preferred.

New: Column Editing

Upgrade Tour Movie: [click here](#)



Feature

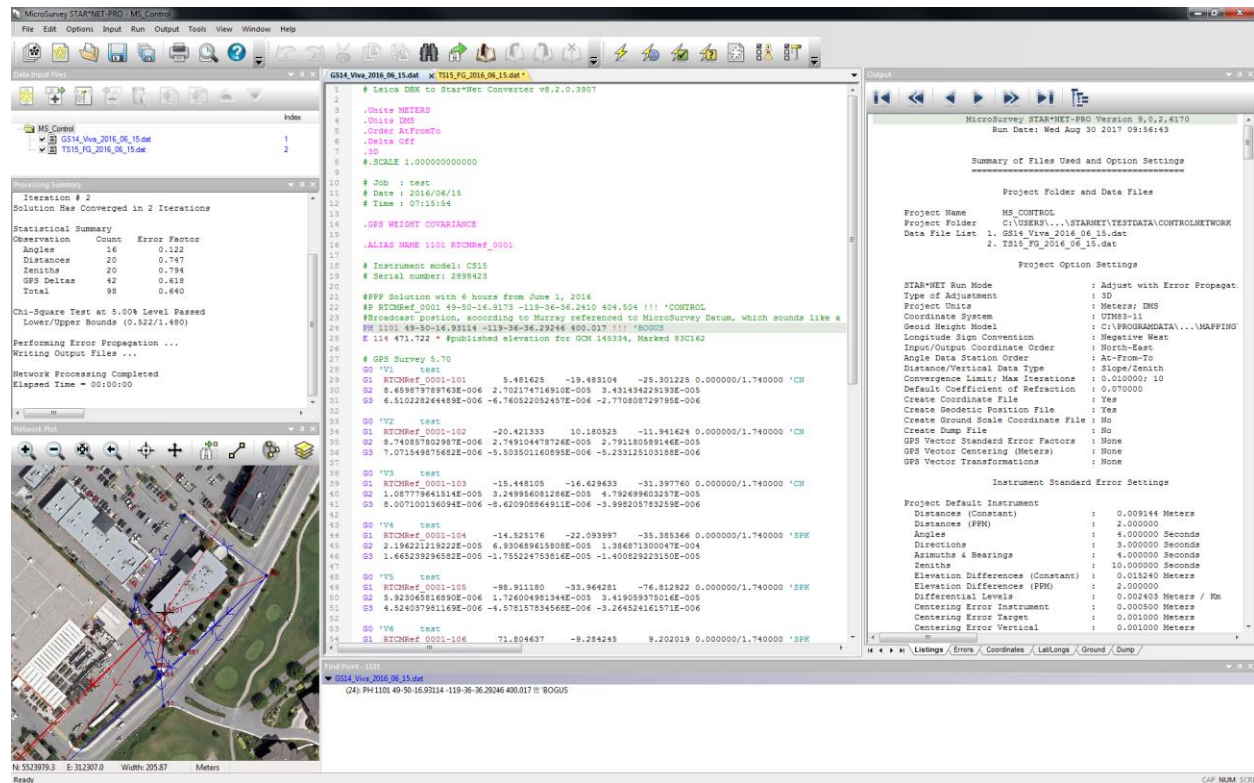
Column Editing
(Alt+Select)

Benefit

Column Editing makes it easy to make a mass change across consecutive, similarly formatted data lines. This is consistent with other advanced text editors such as Notepad++.

Enhanced: Find Point

Upgrade Tour Movie: [click here](#)



Feature

Benefit

Station Name Links

The Find Point tool can now be activated by clicking on a station name in any of the input data files (new in V9), in addition to the output files (existing in V7/V8).

Find Station Name

The Find Point panel now shows the station name in its title bar so you can know at a glance what the results are based on.

Center Network Plot

The Find Point tool now causes the Network Plot to center on the found station, providing additional context to the results.

Automatic Bookmarks

The Find Point results are now also bookmarked in your data files, so they can be cycled through quickly using the Next/Previous Bookmark controls. These bookmarks are automatically refreshed when another Find Point is activated.